



# Surgical gowns



# Uncompromising protection – evercare<sup>®</sup> surgical gowns

## Comfortably in control with evercare<sup>®</sup> Original surgical gowns

Made of breathable medical fabric which has for decades been considered as industry standard for medical gowns evercare<sup>®</sup> Original provides comfort you feel. The fabric has a soft textile-like structure and features advanced technology: fluid resistant and repellent barrier that breathes.

## Highly resistant and repellent SMS-material for evolving needs of medical professionals evercare<sup>®</sup> XP

Our SMS technology utilizes several layers of fabric to provide a very high level of repellency. The fabric features several tightly packed meltblown layers sandwiched between strong spunbond outer layers. An advanced barrier to body fluids and microbes.

## Irrespective of the gown material evercare<sup>®</sup> gowns have different protection levels for different needs

- **Basic** – with single back for dry operations of short duration
- **Standard** – with widely overlapping back, the universal gown” for dry operations
- **Special** – with widely overlapping back and breathable film/nonwoven reinforcement in sleeves and front for wet operations, for orthopaedics
- **Extra** – with wide pe-hem for urological procedures





Large size velcro strap at the neck for secure adjustment



Comfortable, user friendly design providing ease of movement



The carefully designed features in both gown types are largely the same

- Comfortable, user friendly design providing ease of movement
- Excellent sizing
- High quality cuffs for improved comfort
- Large size velcro strap at the neck for secure adjustment
- All evercare® gowns meet EN13795
- All evercare® gowns are available with or without hand towels
- State-of-the-art packaging system with handy functional dispenser and labeling in accordance with EN ISO 15223-1 and EN 1041
- Barcoded removable labels for improved traceability

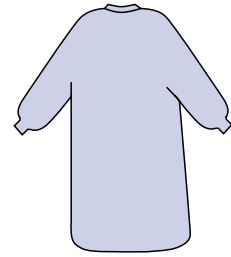


## evercare® Original – spunlace nonwoven

## Basic

For dry operations of short duration

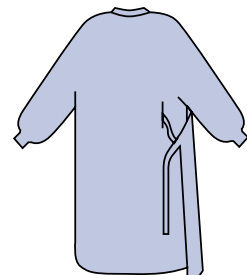
<b>REF 2100</b>	130 cm, L, with 2 hand towels	Pack count: 1/18/36
<b>REF 2101</b>	150 cm, XL, with 2 hand towels	Pack count: 1/16/32
<b>REF 2110</b>	130 cm, L, without hand towels	Pack count: 1/18/36
<b>REF 2111</b>	150 cm, XL, without hand towels	Pack count: 1/16/32



## Standard

“Universal” gown, for dry operations

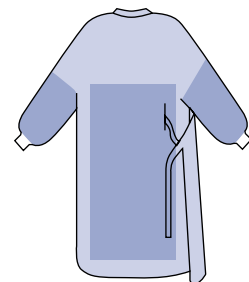
<b>REF 2204</b>	120 cm, M-short, with 2 hand towels	Pack count: 1/18/36
<b>REF 2200</b>	130 cm, M, with 2 hand towels	Pack count: 1/18/36
<b>REF 2201</b>	140 cm, L, with 2 hand towels	Pack count: 1/16/32
<b>REF 2202</b>	150 cm, XL, with 2 hand towels	Pack count: 1/16/32
<b>REF 2203</b>	160 cm, XXL, with 2 hand towels	Pack count: 1/14/28
<b>REF 2214</b>	120 cm, M-short, without hand towels	Pack count: 1/18/36
<b>REF 2210</b>	130 cm, M, without hand towels	Pack count: 1/18/36
<b>REF 2211</b>	140 cm, L, without hand towels	Pack count: 1/16/32
<b>REF 2212</b>	150 cm, XL, without hand towels	Pack count: 1/16/32
<b>REF 2213</b>	160 cm, XXL, without hand towels	Pack count: 1/14/28



## Special

Reinforced, for wet operations, for orthopaedics

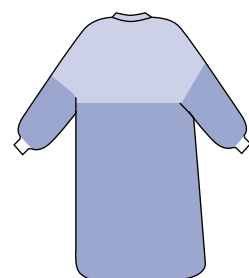
<b>REF 2304</b>	120 cm, M-short, with 2 hand towels	Pack count: 1/12/24
<b>REF 2303</b>	130 cm, M, with 2 hand towels	Pack count: 1/12/24
<b>REF 2300</b>	140 cm, L, with 2 hand towels	Pack count: 1/12/24
<b>REF 2301</b>	150 cm, XL, with 2 hand towels	Pack count: 1/12/24
<b>REF 2302</b>	160 cm, XXL, with 2 hand towels	Pack count: 1/14/24
<b>REF 2314</b>	120 cm, M-short, without hand towels	Pack count: 1/14/24
<b>REF 2313</b>	130 cm, M, without hand towels	Pack count: 1/14/24
<b>REF 2310</b>	140 cm, L, without hand towels	Pack count: 1/14/24
<b>REF 2311</b>	150 cm, XL, without hand towels	Pack count: 1/14/24
<b>REF 2312</b>	160 cm, XXL, without hand towels	Pack count: 1/14/24



## Extra

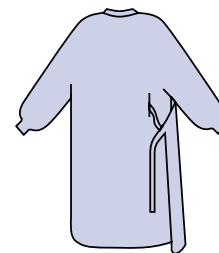
For urology

<b>REF 2400</b>	156 cm, XL, with 2 hand towels	Pack count: 1/16/32
<b>REF 2410</b>	156 cm, XL, without hand towels	Pack count: 1/16/32

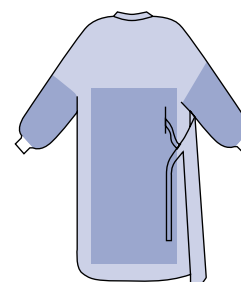


## evercare® XP – SMS nonwoven

Standard XP	Universal gown, for dry operations	
<b>REF 2504</b>	120 cm, M-short, without hand towels	Pack count: 1/21/42
<b>REF 2505</b>	130 cm, M, without hand towels	Pack count: 1/20/40
<b>REF 2507</b>	140 cm, L, without hand towels	Pack count: 1/20/40
<b>REF 2509</b>	150 cm, XL, without hand towels	Pack count: 1/18/36
<b>REF 2510</b>	160 cm, XXL, without hand towels	Pack count: 1/18/36
<b>REF 2514</b>	120 cm, M-short, with 2 hand towels	Pack count: 1/21/42
<b>REF 2515</b>	130 cm, M, with 2 hand towels	Pack count: 1/20/40
<b>REF 2517</b>	140 cm, L, with 2 hand towels	Pack count: 1/20/40
<b>REF 2519</b>	150 cm, XL, with 2 hand towels	Pack count: 1/18/36
<b>REF 2520</b>	160 cm, XXL, with 2 hand towels	Pack count: 1/18/36

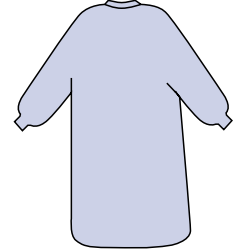


Special XP	Reinforced for wet operations, for orthopaedics	
<b>REF 2534</b>	120 cm, M-short, without hand towels	Pack count: 1/21/42
<b>REF 2535</b>	130 cm, M, without hand towels	Pack count: 1/20/40
<b>REF 2537</b>	140 cm, L, without hand towels	Pack count: 1/20/40
<b>REF 2539</b>	150 cm, XL, without hand towels	Pack count: 1/18/36
<b>REF 2540</b>	160 cm, XXL, without hand towels	Pack count: 1/18/36
<b>REF 2544</b>	120 cm, M-short, with 2 hand towels	Pack count: 1/21/42
<b>REF 2545</b>	130 cm, M, with 2 hand towels	Pack count: 1/20/40
<b>REF 2547</b>	140 cm, L, with 2 hand towels	Pack count: 1/20/40
<b>REF 2549</b>	150 cm, XL, with 2 hand towels	Pack count: 1/18/36
<b>REF 2550</b>	160 cm, XXL, with 2 hand towels	Pack count: 1/18/36



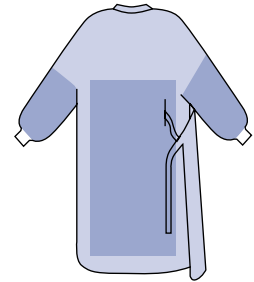
evercare<sup>®</sup> Essentia – SMS nonwoven

Standard	Gown for dry operations	
<b>REF 2521</b>	115 cm, M-short, without hand towels and crepe	Pack count: 2/21/42
<b>REF 2522</b>	126 cm, M, without hand towels and crepe	Pack count: 2/20/40
<b>REF 2523</b>	137 cm, L, without hand towels and crepe	Pack count: 2/20/40
<b>REF 2524</b>	147 cm, XL, without hand towels and crepe	Pack count: 2/18/36
<b>REF 2525</b>	155 XXL, without hand towels and crepe	Pack count: 2/18/36



Standard	Gown for dry operations	
<b>REF 2526</b>	115 cm, M-short, with hand towels and crepe	Pack count: 2/21/42
<b>REF 2527</b>	126 cm, M, with hand towels and crepe	Pack count: 2/20/40
<b>REF 2528</b>	137 cm, L, with hand towels and crepe	Pack count: 2/20/40
<b>REF 2529</b>	147 cm, XL, with hand towels and crepe	Pack count: 2/18/36
<b>REF 2530</b>	155 XXL, with hand towels and crepe	Pack count: 2/18/36

Special	Reinforced gown for dry operations	
<b>REF 2551</b>	115 cm, M-short, without hand towels and crepe	Pack count: 2/21/42
<b>REF 2552</b>	126 cm, M, without hand towels and crepe	Pack count: 2/20/40
<b>REF 2553</b>	137 cm, L, without hand towels and crepe	Pack count: 2/20/40
<b>REF 2554</b>	147 cm, XL, without hand towels and crepe	Pack count: 2/18/36
<b>REF 2555</b>	155 XXL, without hand towels and crepe	Pack count: 2/18/36



Special	Reinforced gown for wet operations	
<b>REF 2556</b>	115 cm, M-short, with hand towels and crepe	Pack count: 2/21/42
<b>REF 2557</b>	126 cm, M, with hand towels and crepe	Pack count: 2/20/40
<b>REF 2558</b>	137 cm, L, with hand towels and crepe	Pack count: 2/20/40
<b>REF 2559</b>	147 cm, XL, with hand towels and crepe	Pack count: 2/18/36
<b>REF 2560</b>	155 XXL, with hand towels and crepe	Pack count: 2/18/36

# Label information in accordance with EN ISO 15223-1 and EN 1041

Surgical gowns

evercare® is a registered trademark of OneMed Group Oy

Article number

Barcode in removable label

LOT code

Sterilization method: – irradiation R

Single use

CE label: certifies that the product complies with the European legal requirements for medical devices

The identification number of the notified body

Manufacturers contact information

Use before

Does not contain natural rubber latex

DE OP-Mantel  
FR Casaque chirurgicale  
SE OP-rock  
FI Leikkaustakki  
DA Operationskittel  
NO Operasjonsfrakk  
EE Operatsioonikittel  
LV Ķirurgiskais halāts  
LT Chirurginis chalatas  
PL Fartuch operacyjny  
RU Хирургический халат  
SK Operačný plášť  
CZ Operační plášť  
PT Bata cirúrgica  
ES Bata quirúrgica

# Notes

---

Surgical gowns